

IP Expert on
COnlineLabs

R&S Standard Topology

SW1

- Port 7
- Port 1
- Port 3
- Port 5
- Port 9
- Port 19 & 20
- Port 16 & 17
- Port 13 & 14
- G0/1
- G0/2

SW2

- Port 12
- Port 2
- Port 4
- Port 6
- Port 8
- Port 10
- Port 11
- Port 19 & 20
- Port 16 & 17
- Port 13 & 14
- G0/1

SW3

- Port 1
- Port 3
- Port 5
- Port 19 & 20
- Port 16 & 17
- Port 13 & 14
- G0/1

SW4

- Port 2
- Port 4
- Port 6
- Port 8
- Port 19 & 20
- Port 16 & 17
- Port 13 & 14

- IPER1 E1/0
- IPER2 Fa0/0
- IPER4 Fa0/0
- IPER5 Fa0/0
- IPEBB1 E0/0
- SW4
- SW3
- SW2
- SW2
- SW2
- SW3

- IPER1 E2/0
- IPER6 Fa0/0
- IPER7 Fa0/0
- IPER8 Fa0/0
- IPER9 E1/0
- IPEBB2 E0/0
- IPEBB3 E1/0
- SW4
- SW3
- SW1
- SW1

- IPER2 Fa0/1
- IPER4 Fa0/1
- IPER5 Fa0/1
- SW4
- SW2
- SW1
- SW1

- IPER6 Fa0/1
- IPER7 Fa0/1
- IPER8 Fa0/1
- IPER9 E1/1
- SW3
- SW2
- SW1

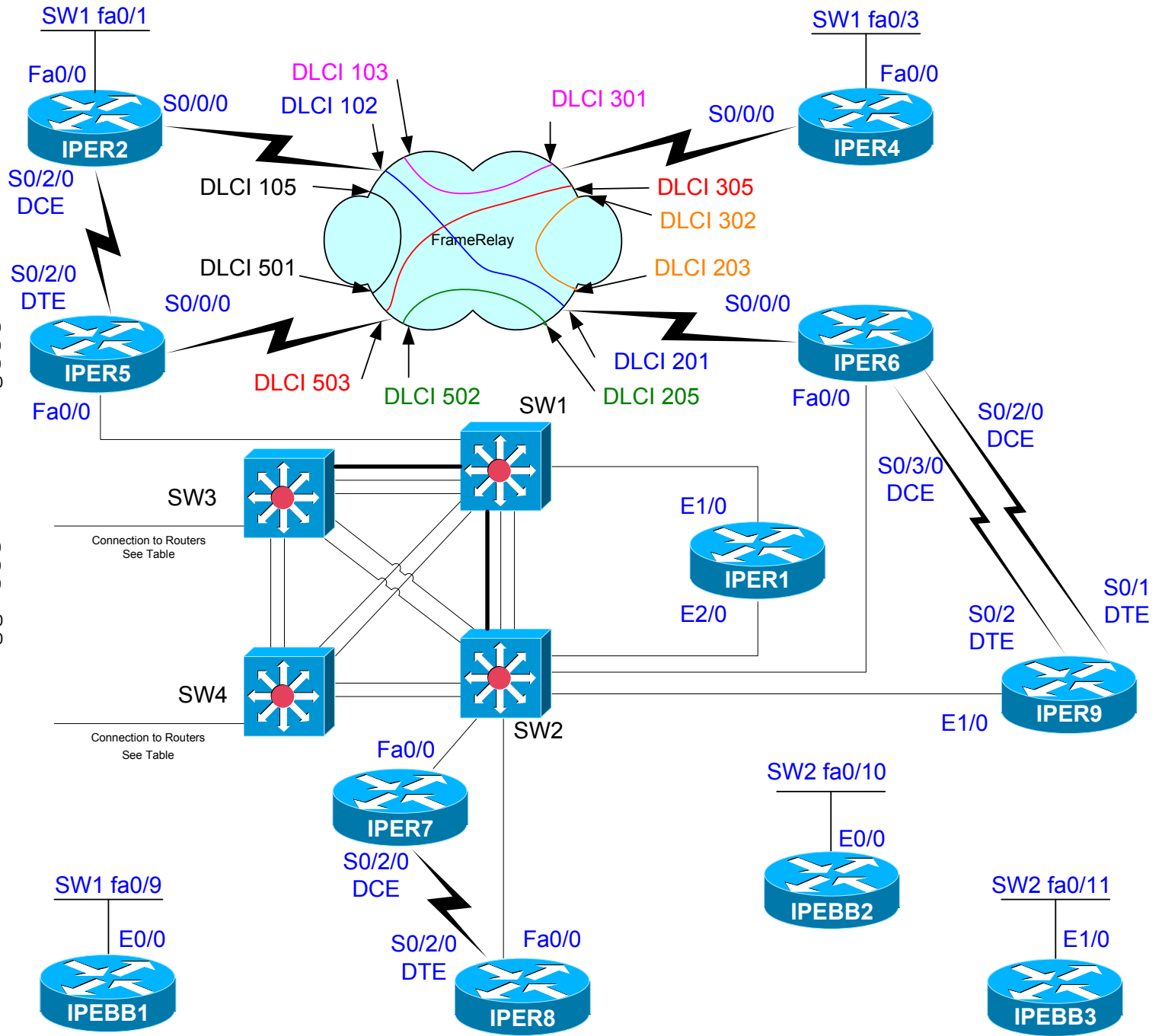


Diagram A – Base Physical Connectivity